

Analisi delle segnalazioni internazionali di encefalomielite acuta disseminata post vaccinazione

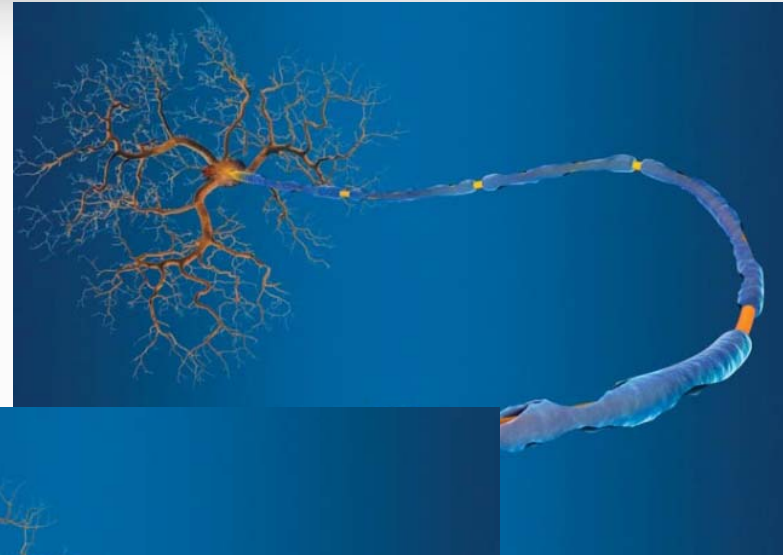
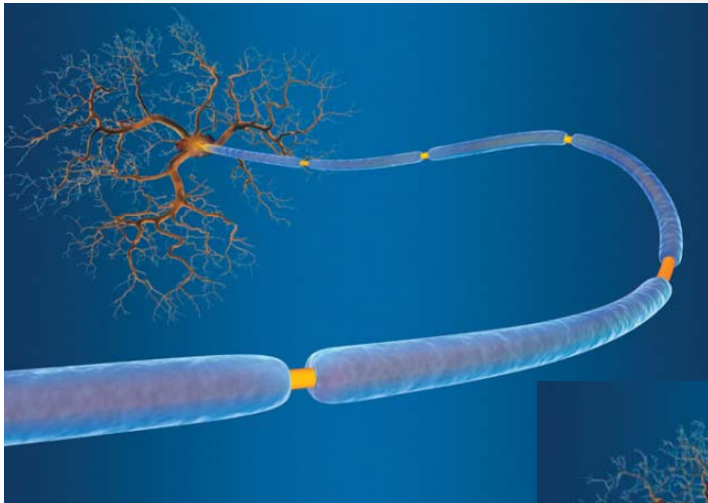
Paolo Pellegrino MD

Unità di farmacologia clinica, dipartimento di scienze biomediche e cliniche. Azienda Ospedaliera Luigi Sacco - Università di Milano

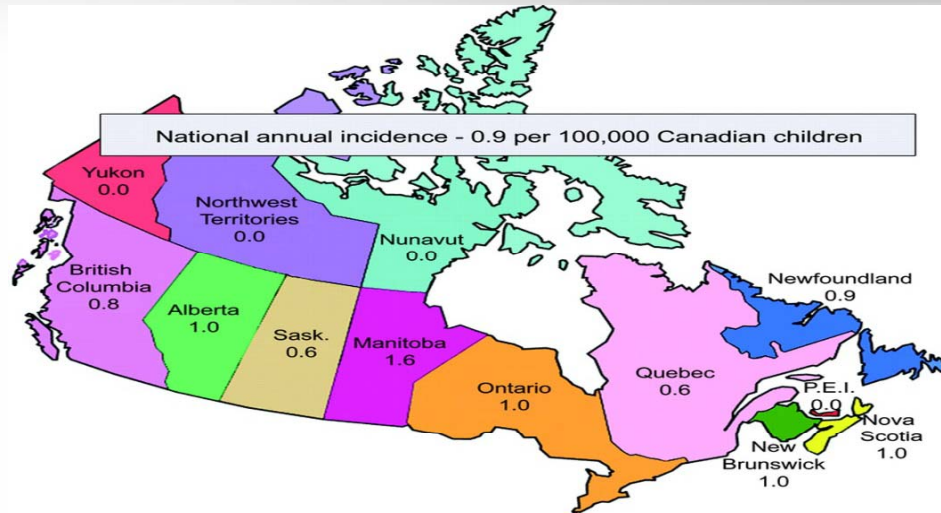
Acute Disseminated Encephalomyelitis (ADEM)

- L'encefalomielite acuta disseminata (ADEM) identifica un quadro sindromico a decorso monofasico, ad eziologia **autoimmune**, caratterizzato da un processo infiammatorio e demielinizzante che investe il sistema nervoso centrale.
- La malattia esordisce improvvisamente, con segni clinici di **encefalite acuta e deficit neurologici focali**.
- Tradizionalmente, con riferimento **all'eziopatogenesi**, viene distinta un'encefalomielite acuta disseminata **post-infettiva** e un'encefalomielite acuta disseminata **post-vaccinica**.

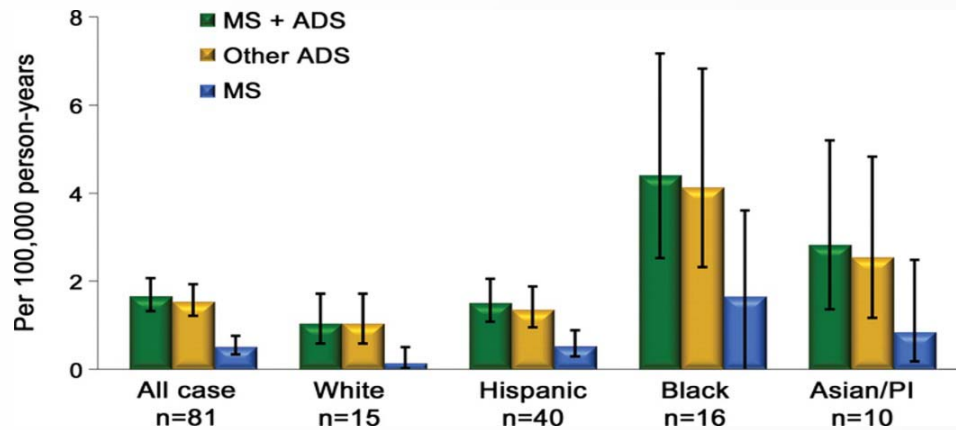
Acute Disseminated Encephalomyelitis (ADEM)



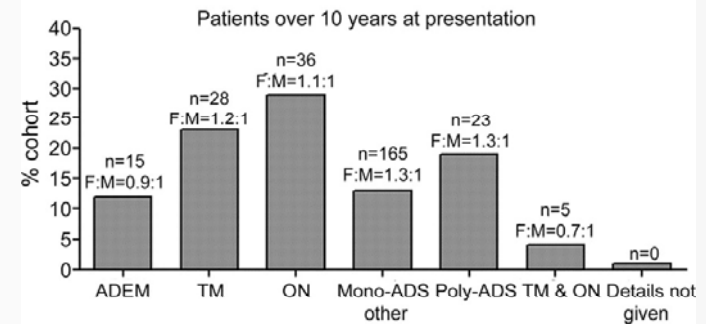
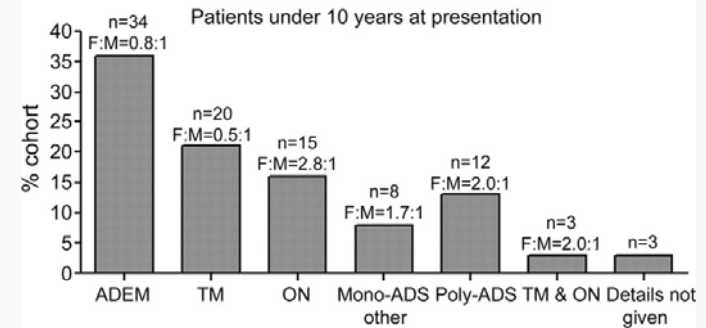
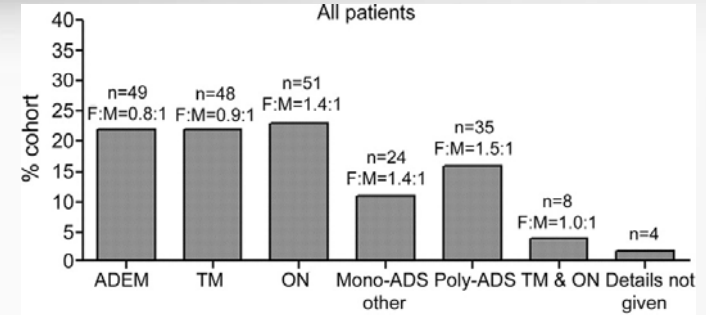
What is already known



Banwell B et al. Neurology 2009;72:232-239

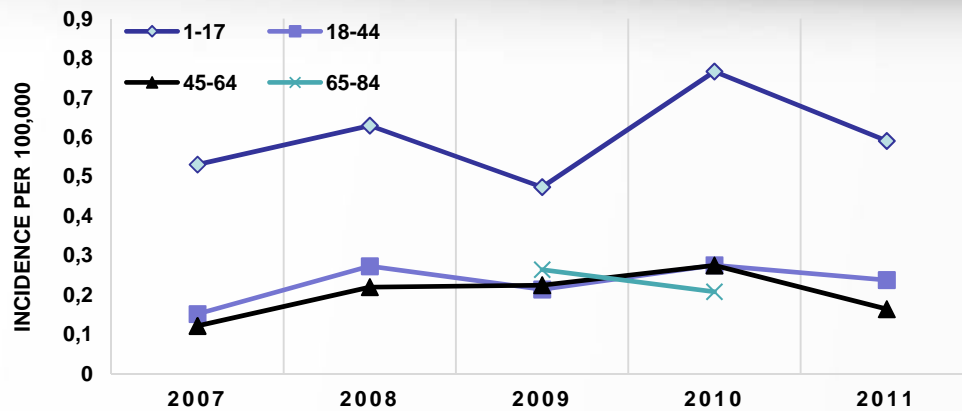


Langer-Gould A et al. Neurology 2011;77:1143-1148

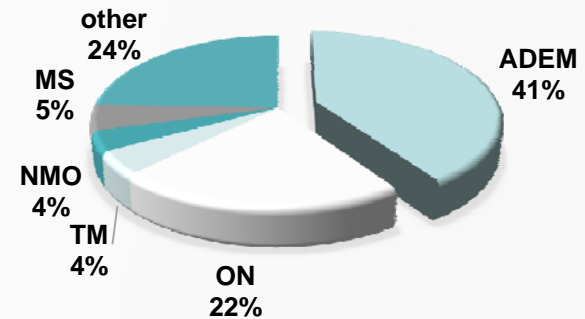


Banwell B et al. Neurology 2009;72:232-239

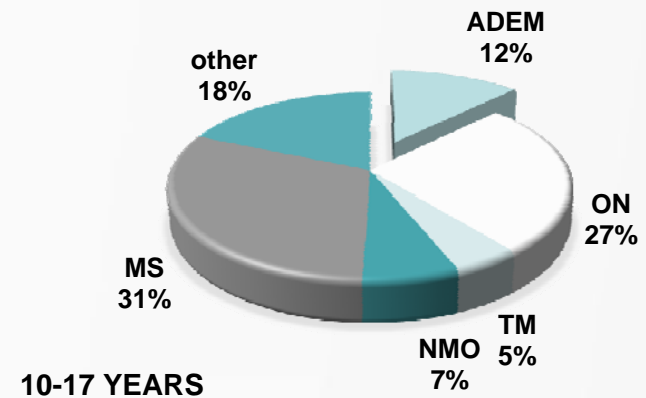
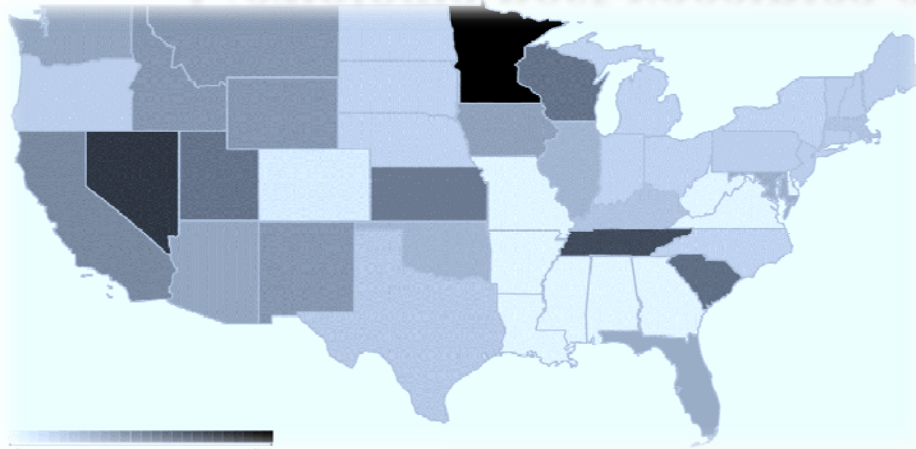
What is already known



0-9 YEARS



L'eziologia post vaccinica è descritta nel 5% dei casi



10-17 YEARS

Pellegrino P et al. Unpublished data

What is already known

Vaccination forms Reported incidences of ADEM

Measles

Live measles vaccine 1–2/million

Rabies

Neural vaccine (Semple) 1/300–1/7,000

Duck embryo vaccine 1/25,000

Non-neural human diploid cell 1/75,000

Japanese B encephalitis

Inactivated mouse-brain derived JEV 1993–1999 0.2/100,000 (Japan); 0/813,000 (USA)

Smallpox

New York City Board of Health strain of vaccinia
2002–2004 3/665,000

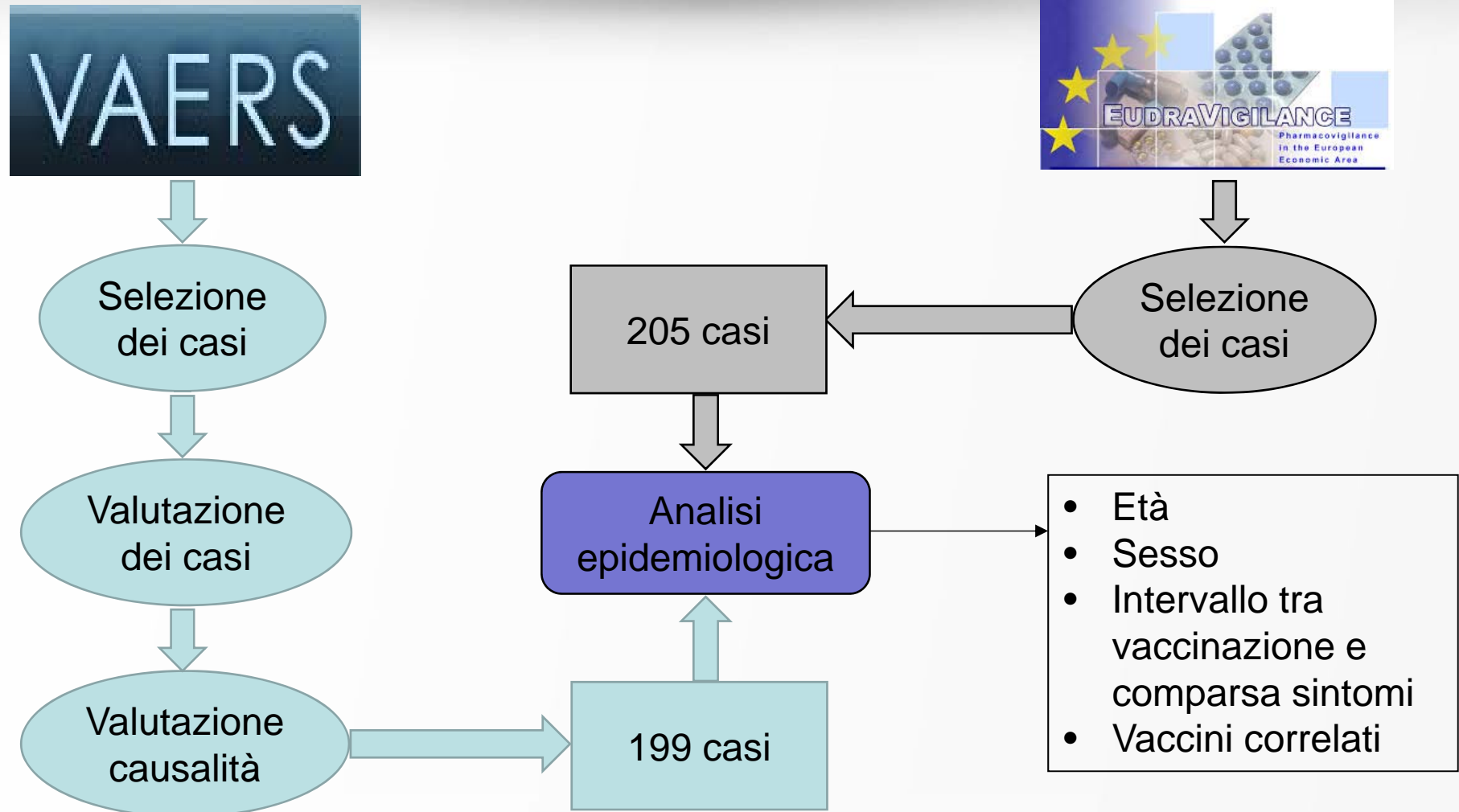
Diphtheria/pertussis/tetanus 0.9/100,000

Hepatitis B

Eight cases of CNS inflammation
within 10 weeks

Tenembaum S et al. Neurology 2007;68:S23-S36

What we did

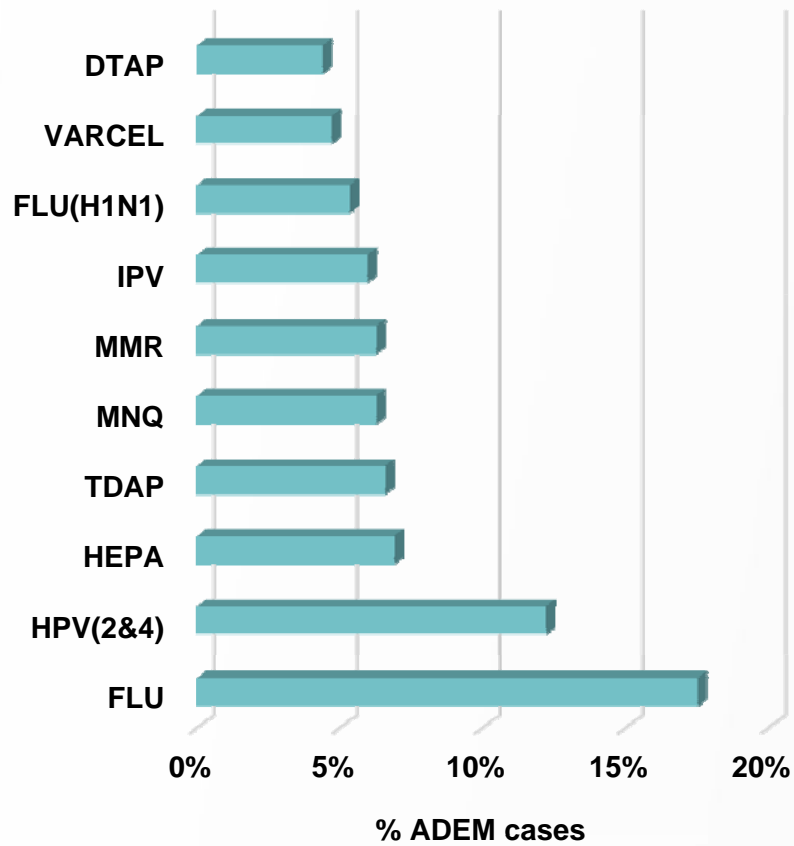


What we found

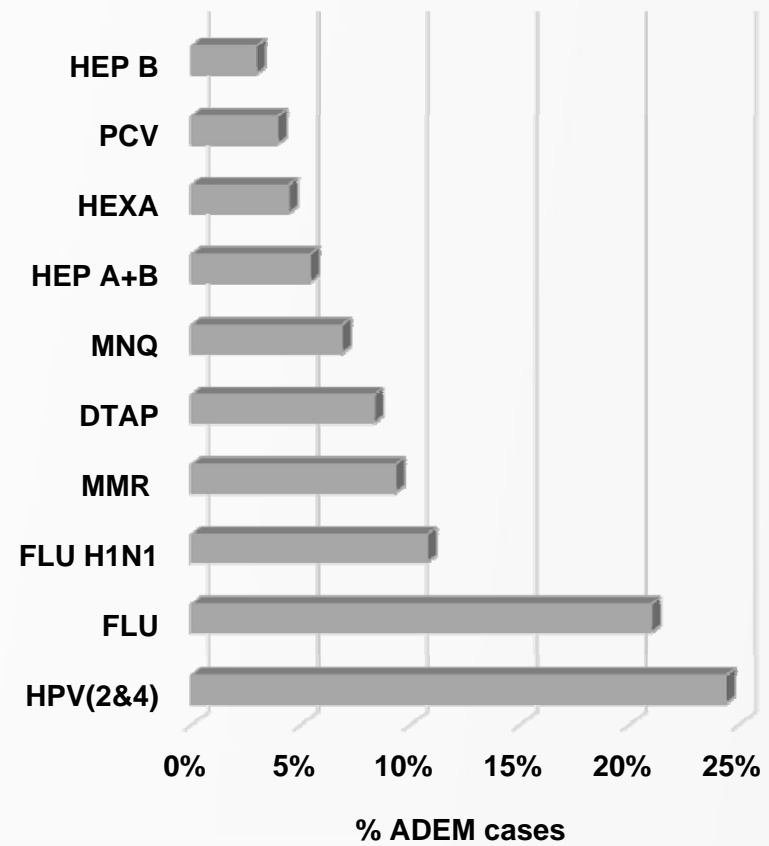
	VAERS (%)	EVPM (%)
Età		
0-17 anni	99 (48%)	94(48%)
18-64 anni	79 (40%)	92 (45%)
65+ anni	12 (6%)	7 (3%)
Non riportato	14 (7%)	7 (3%)
Sesso		
Maschi	93 (47%)	80 (39%)
Femmine*	101 (51%)	123 (60%)
Non riportato	5 (3%)	2 (1%)
Intervallo tra vaccinazione e comparsa sintomi		
0-2 giorni	41 (21%)	
2-30 giorni	121 (61%)	
Oltre 30 giorni	37 (19%)	

What we found

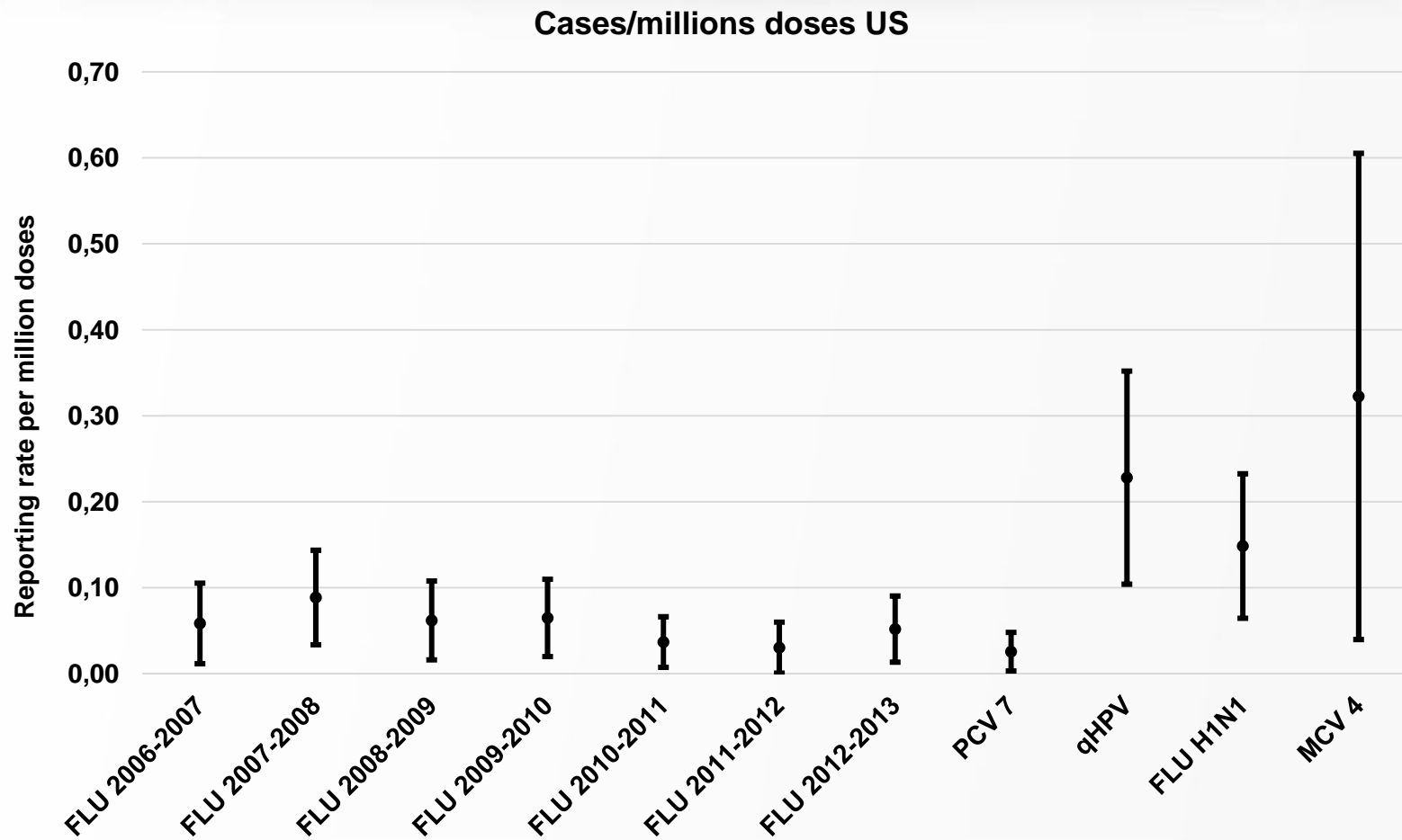
VAERS



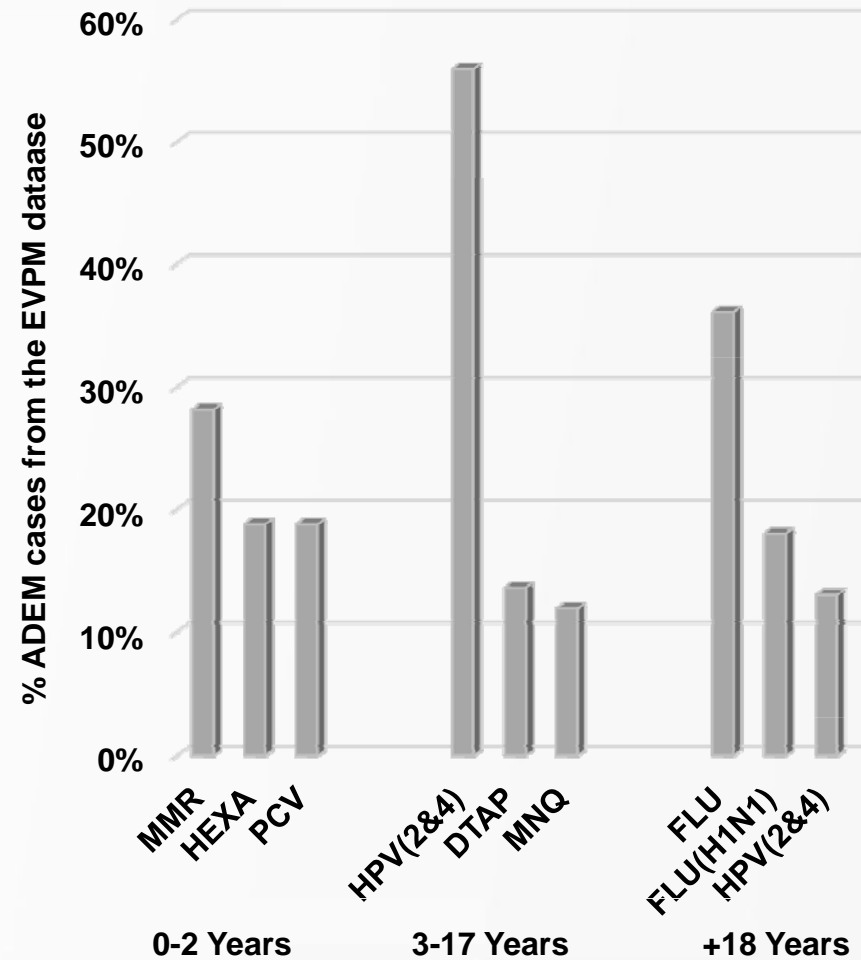
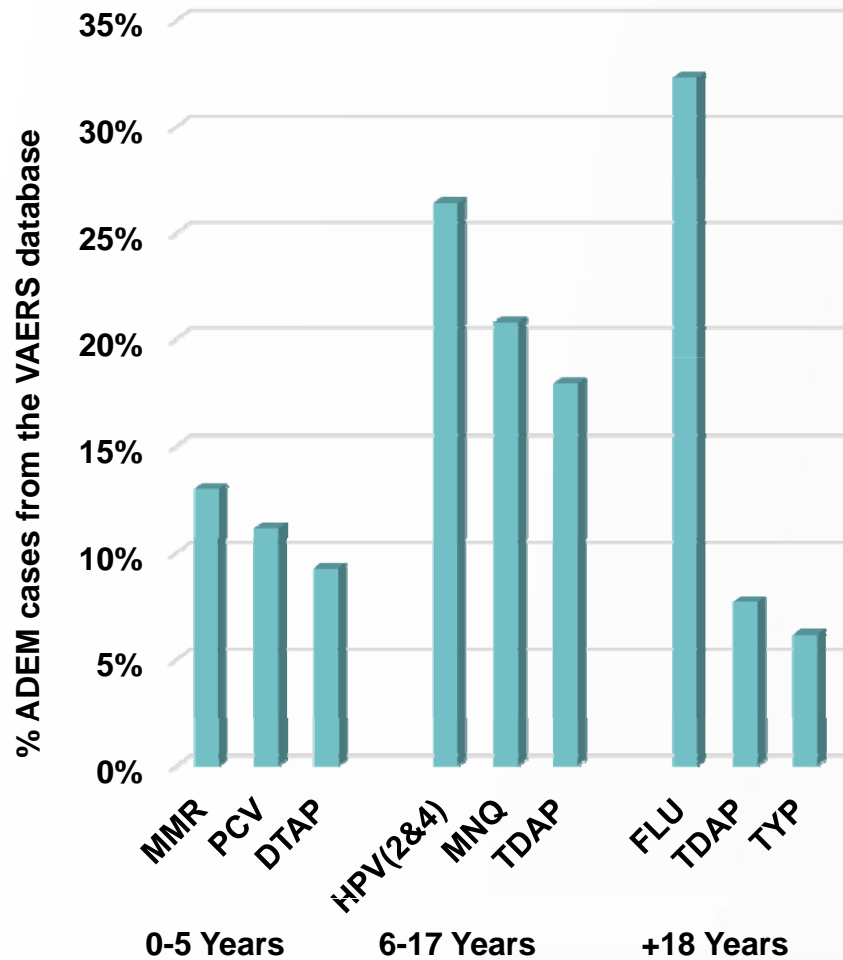
EVPM



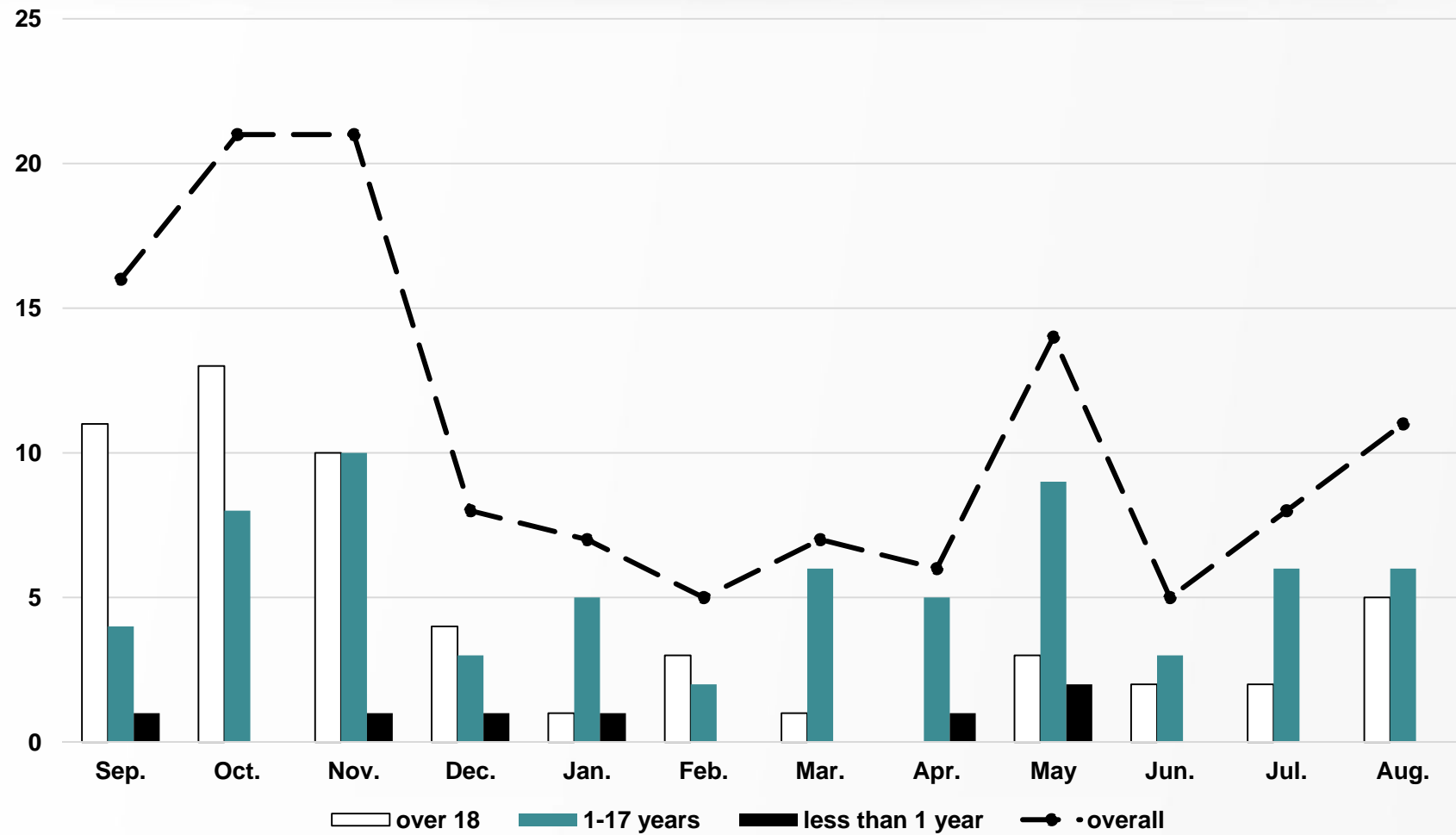
What we found



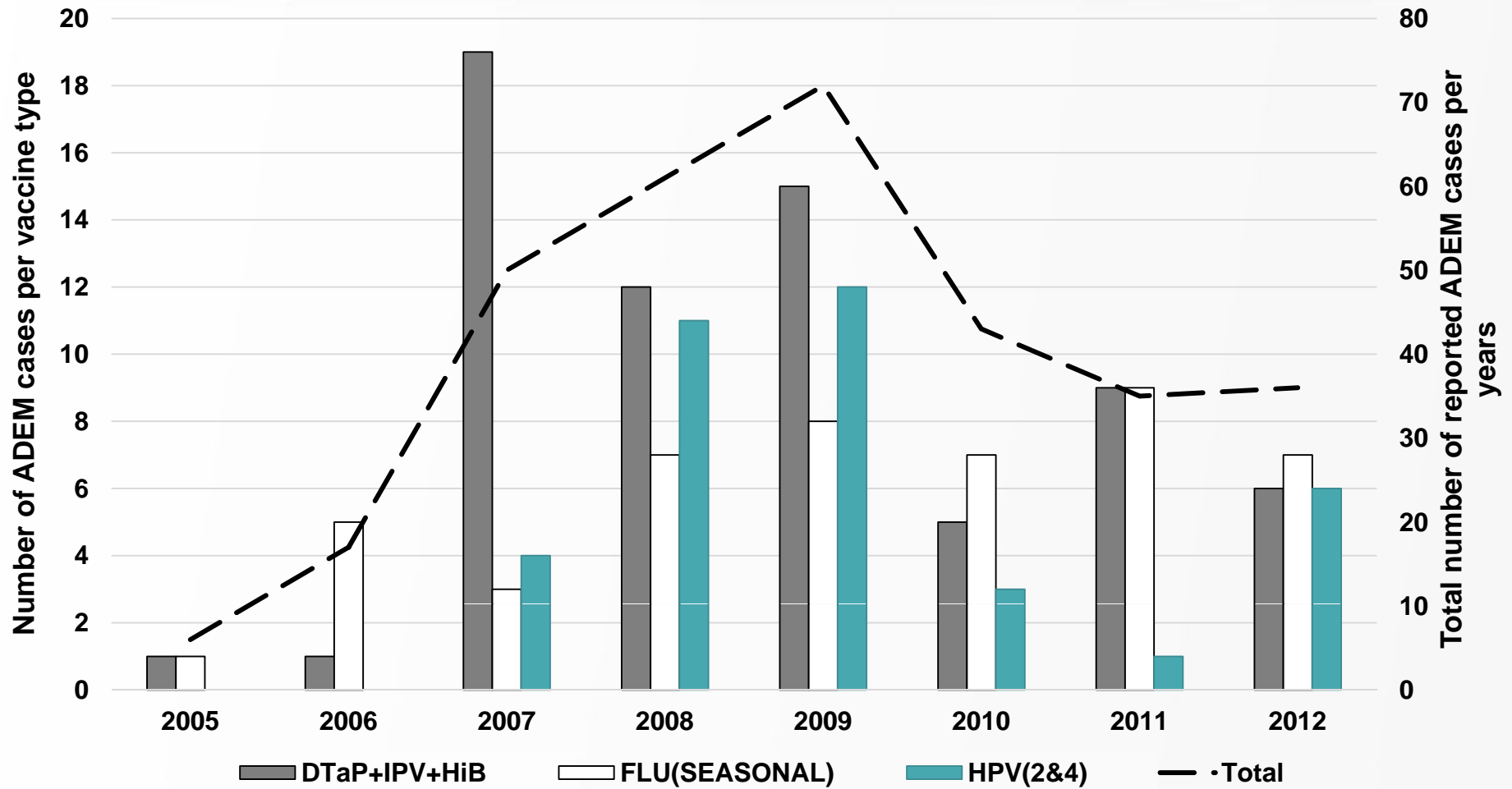
What we found



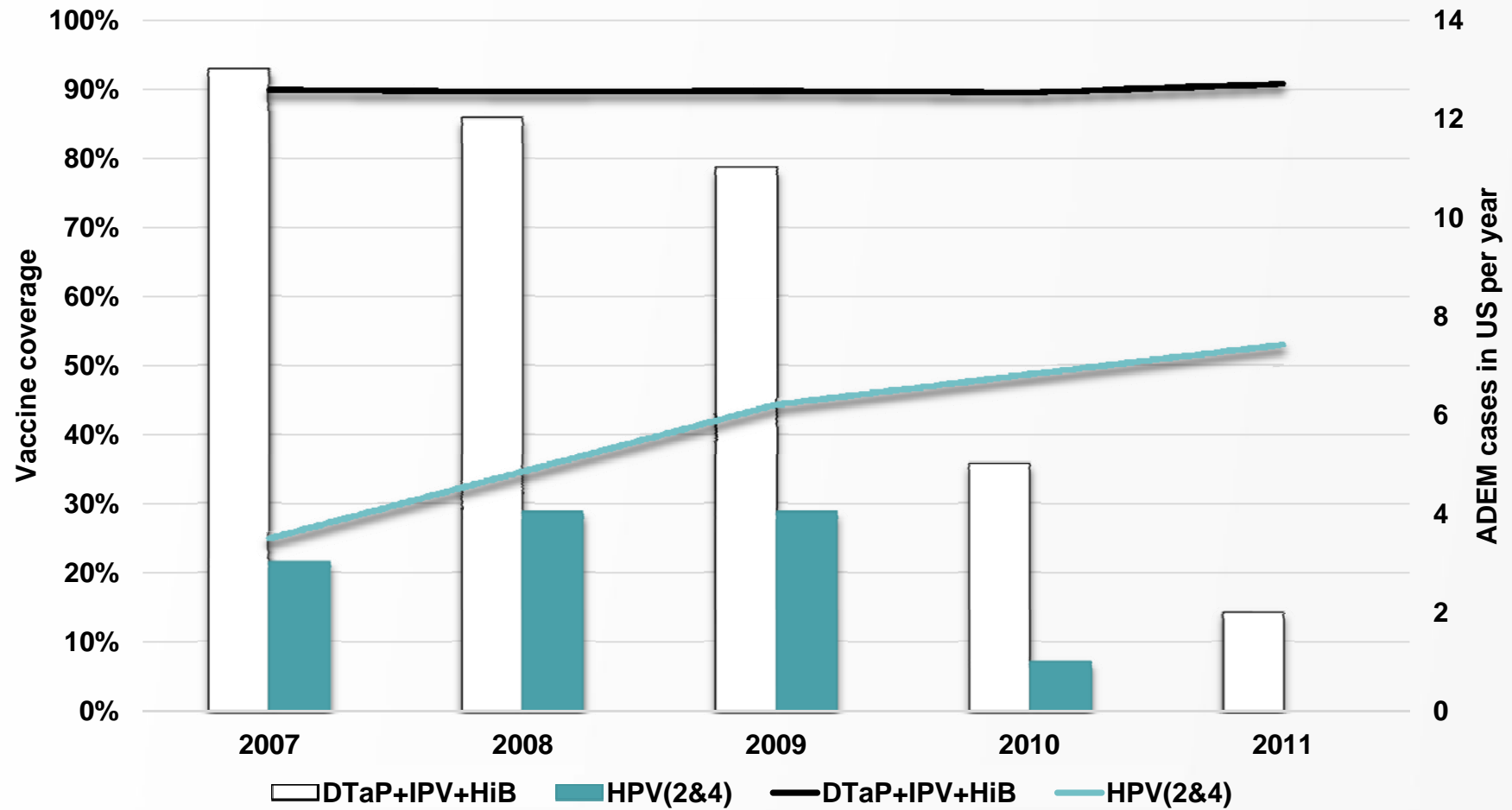
What we found



What we found



What we found



What we add

- In questo studio abbiamo descritto, per la prima volta, le caratteristiche epidemiologiche della encefalomielite acuta disseminata post-vaccinica
- A differenza degli studi precedenti riguardanti i casi di ADEM post infettiva, abbiamo osservato che questa patologia può riguardare ogni età.
- Abbiamo osservato che il vaccino anti-influenzale e anti-HPV siano quelli più comunemente associati a questa reazione avversa.
- La diminuzione nel numero di casi di ADEM riportati per anno è verosimilmente associabile ad una riduzione dell'interesse per questo evento avverso, nota causa di under-reporting.

Thanks!

Unità di farmacologia clinica, dipartimento di scienze biomediche e cliniche.
Azienda Ospedaliera Luigi Sacco - Università di Milano

- Prof Emilio Clementi
- Dr.ssa Sonia Radice
- Dr.ssa Carla Carnovale
- Dr.ssa Valentina Perrone
- Dr. Marco Pozzi
- Dr. Dionigi Salvati
- Dr.ssa Stefania Antoniazzi
- Dr.ssa Marta Gentili
- Dr.ssa Tatiana Brusadelli



OPEN ACCESS Freely available online

PLOS ONE

Acute Disseminated Encephalomyelitis Onset: Evaluation Based on Vaccine Adverse Events Reporting Systems

Paolo Pellegrino¹*, Carla Carnovale¹*, Valentina Perrone¹, Marco Pozzi², Stefania Antoniazzi³, Emilio Clementi^{1,2}, Sonia Radice¹

1 Unit of Clinical Pharmacology, University Hospital "Luigi Sacco", Università di Milano, Milan, Italy, 2 Scientific Institute IRCCS E. Medea, 23842 Bosisio Parini, Lecco, Italy, 3 IRCCS Foundation Ca' Granda Ospedale Maggiore Policlinico, Milan, Italy